

Security module UCM500

Hydraulic central with doublé valve in down direction DSV-A3 y C-LRV with controler C-DELCON from Bucher Hydraulics AG®.

■ Descripción:

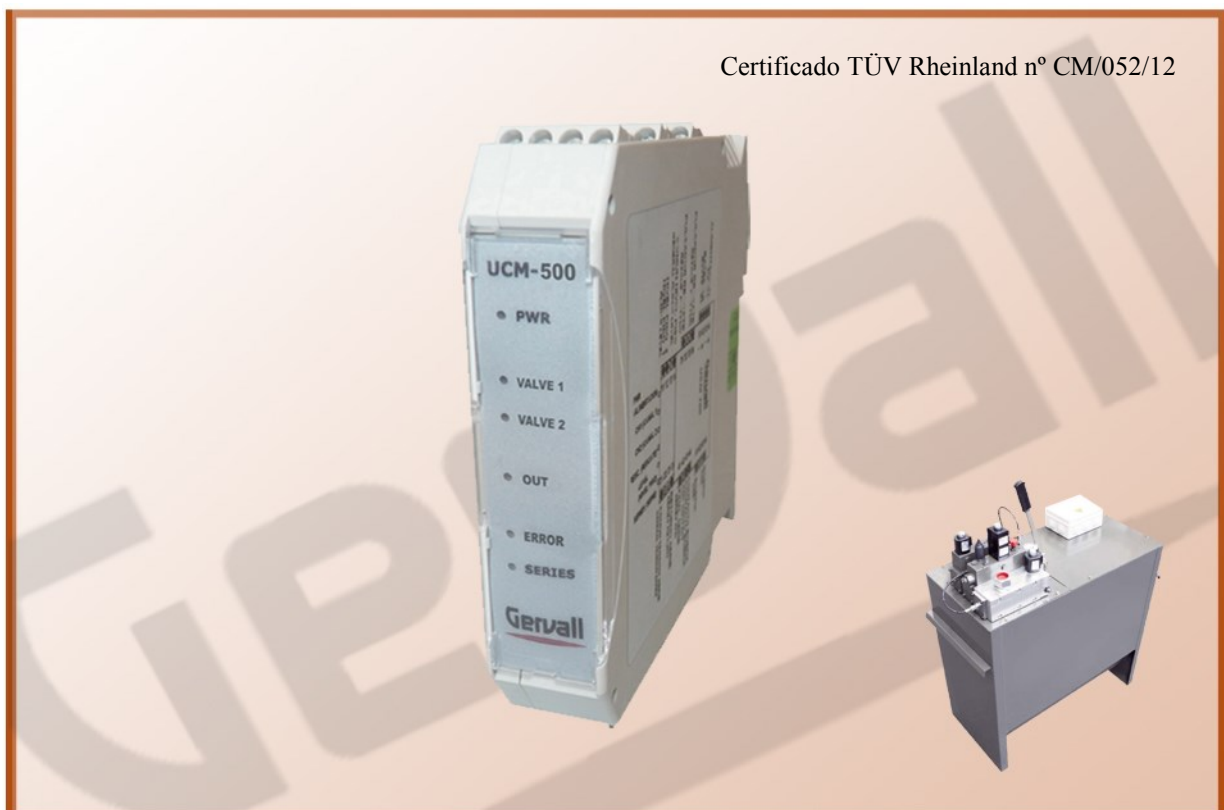
Security module for control of protection against unintended car movement (UCM, Unintended Car Movement) in fulfillment of appendix 3 of regulation EN 81-2:1998+A3:2009 (point 9.13) in hydraulic central with double valve in down direction DSV-A3 y C-LRV with controler C-DELCON from Bucher Hydraulics AG®.

Functional Description.

The UCM500 module controls the state of the valves supply in hydraulic central with valves in down direction. Its function is to check, that open doors, the two valves are without tensión. In the case of detecting that one of them remains supplied, the module blocks, preventing the next setting off of the lift. Thus the module prevents unintended car movement.

Via the series entry, the module detects when the car is stopped with open doors, in such a way that when the entry of series of the module is activated the contact of the module is closed (clips 41-44) allowing the connections of the contactors and when the entry is disconnect the contact is opened. The module indicates this situation with the led OUT.

When the car is stopped with open doors the entries of the valves control are monitored. The module detects if any of the valves have remained supplied and will not close ist contact, preventing the next setting off of the car. This situation is indicated with intermitent led ERROR.

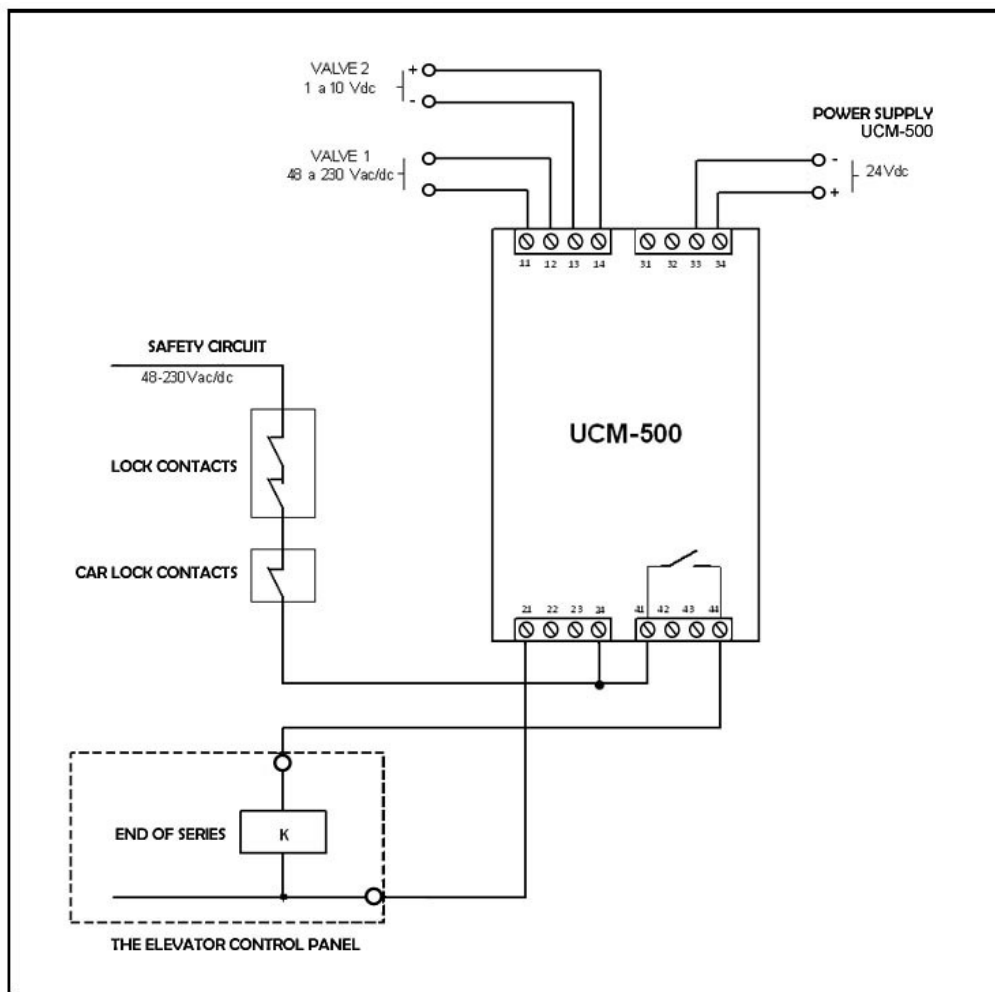


■ Electrical features

- Current supply: from 20 to 30 Vdc.
- Current of control signals of valve 1: from 48 to 230 Vac/dc.
- Current of control signals of valve 2: de 1 a 10Vdc.
- Current of series entry: from 48 to 230Vac/dc.
- Relay contact of module: 8A 250 Vac.

Diagram of conection

Connect the module UCM to the control panel and to the hydraulic control as demonstrated in the diagram:



DSV-A3 and C-LRV® is a registered trademark of BUCHER HYDRAULICS



APLICACIONES ELECTROMECANICAS GERVALL, S.A.
Eusebi Millán, 5-7 Pol. Ind. Roquetes
Apdo. Correos 42
08800 Vilanova i la Geltrú (Barcelona-España)
Tel. 93 893 0228 Fax. 93 893 5590
Web: www.gervall.com email: comercial@gervall.com

Note: The company reserves the right to supply materials that may differ slightly from those described in this catalogue.